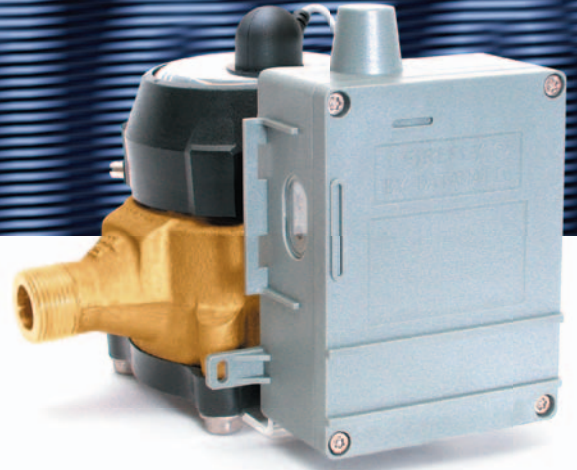


FIREFLY[®] for Water Meters



The FIREFLY for Water represents a breakthrough in AMR technology. It is the only solution to deliver Meter Independence and integrated Usage Profiling in an affordable package.

Meter Independence

The FIREFLY Meter Interface Unit (MIU) installs in minutes on virtually ANY water meter. Optic Sensor FIREFLYs automate direct read registers with a visible sweep needle and wired models support all popular pulse and encoded registers. We call this Meter Independence. It eliminates meter changeout for the purpose of AMR implementation and can save utilities millions of dollars in meters and installation labor. Use existing meters. Maintain the freedom to choose meters without the unforgiving constraints of a proprietary AMR system.

Compatible with any water meter

Interface to encoders, pulsers and direct reads

Right-size meters

Settle usage disputes

Monitor/enforce conservation

Perform virtual turn-offs

Detect leaks

ProfilePLUS Usage Profiling

All FIREFLY MIUs archive consumption data at user-defined intervals. Set the ProfilePLUS interval to 60 minutes and the water FIREFLY stores data for over 74 days. Data like this was previously unavailable without costly flow monitors but is now readily available at every FIREFLY-equipped meter. Settle usage disputes, identify leaks, right-size meters, monitor conservation,

reduce or eliminate off-cycle reads, and enhance customer service.

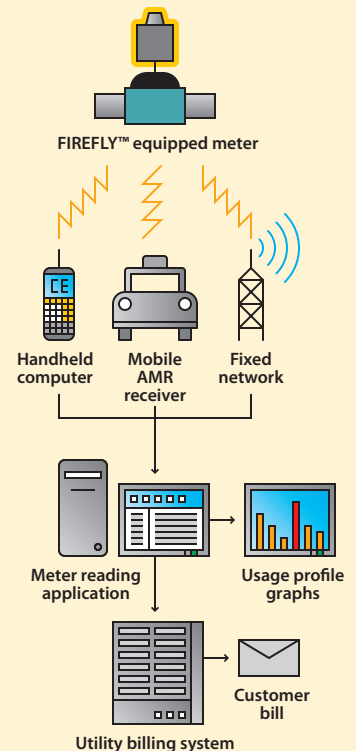
The FIREFLY AMR System includes solutions for water, gas and electric meters, providing a complete solution for multi-utility data collection.

How it works

The FIREFLY MIU transmits current reading and alert info over RF. MIUs also store usage data at user-defined intervals for later retrieval and analysis.

ROADRUNNER handheld, mobile and fixed network receivers capture and carry data back to the meter reading application.

The RouteSTAR meter reading application receives uploaded data from ROADRUNNER receivers. It delivers rich, customizable reporting features and manages the information transfer to and from your utility billing system.



Specifications

Technical

Frequency: 902-928 MHz (ISM Band)
FCC Licensing: Exempt under Part 15
Transmission Interval: User-defined
1 second - 18.2 hours
Operating Temperature: -40°F to +185°F
Battery: Replaceable Lithium

Compatibility

Actaris
AMCO/ABB/Kent
Badger
Butler
Hersey
Master Meter
Metron-Farnier
Neptune/Schlumberger
Performance
Sappel
Sensus/Invensys/Precision/Rockwell
Socam

ProfilePLUS Usage Profiling

Profile Data Interval: User-defined
1 minute to 4.25 hours
Profile Data Unit: User-defined
Profile Data Capacity:
74 days @ 1 hour intervals
299 days @ 4 hour intervals

RF Message Contents

Meter ID
Meter Reading
Leak Flag
High Usage Flag
High Flow Rate Flag
Undersized Meter Flag
Tamper Flag
Low Battery Flag

ProfilePLUS Graph Example

This graph shows a customer who stopped complying with odd-even day watering restrictions part-way through this 30-day period.



For more info,
contact us today.



Datamatic, Ltd.
3600 K Avenue
Plano, TX 75074

800-880-2878 Toll-free
972-234-5000 Phone
972-234-1134 Fax

www.datamatic.com

© 2006 Datamatic, Ltd.
All rights reserved.