

FIREFLY[®] for Electric Meters

Centron[®] model

The FIREFLY for Centron Electric Meters represents a breakthrough in AMR technology. It is the first solution to deliver fixed network-level data at a mobile AMR price point.



The FIREFLY forms the foundation of Datamatic's automatic meter reading solution for residential electric meters. But the FIREFLY doesn't stop there.

ProfilePLUS[™] Usage Profiling

The FIREFLY's patented ProfilePLUS Usage Profiling capability archives consumption data at user-defined intervals for wireless retrieval and analysis.

When set to 15-minute intervals, each FIREFLY holds more than 169 days of usage data. ProfilePLUS is a new tool for settling usage disputes, load studies, tiered billing, right-sizing distribution infrastructure and more.

FIREFLYs also record and transmit the Peak Kilowatt Hour consumption intervals for the current and previous user-defined periods.

Installation takes less than one minute with no tools!

Settle usage disputes

Right-size transformers

Perform load studies

Transmits peak kilowatt hour consumption

Quick Installation

The FIREFLY snaps directly into Centron C1SX model meters and replaces the original display. Installation can be completed in less than one minute and requires no tools! Models for electromechanical meters are also available.

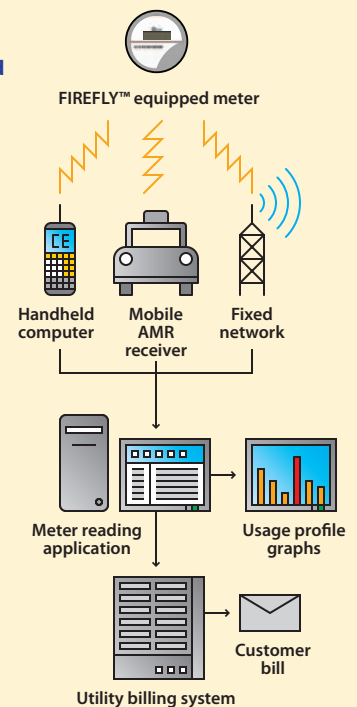
The FIREFLY AMR System includes products for water, gas and electric meters as well as walk-by, mobile, and fixed network collection options, providing a complete solution for multi-utility data collection.

How it works

The FIREFLY MIU transmits current reading, peak demand and alert info over RF. MIUs also store usage data at user-defined intervals for later retrieval and analysis.

ROADRUNNER handheld, mobile and fixed network receivers capture and carry data back to the meter reading application.

The **RouteSTAR** meter reading application receives uploaded data from ROADRUNNER receivers. It delivers rich, customizable reporting features and manages the information transfer to and from your utility billing system.



Specifications

Physical

Fits Itron Centron C1SX electric meters

Technical

Frequency: 902-928 MHz (ISM Band)
FCC Licensing: Exempt under Part 15
Transmission Interval: User-defined
1 second to 18.2 hours
Tracks Forward and Reverse Current Flow
Operating Current: 15 mA
Operating Temperature: -40°F to +185°F

ProfilePLUS Usage Profiling

Profile Data Interval: User-definable
1 minute to 4.25 hours
Profile Data Resolution: To 1 watthour
Profile Data Capacity: 169 days
@ 15 minute intervals

Peak Consumption Data

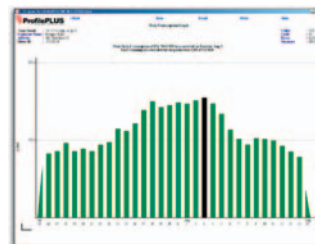
Peak Consumption Interval: User-defined
(1-255 minutes)
Peak Consumption Unit: kWh
Peak Consumption Capacity: Current and
Previous User-defined Interval

RF Message Contents

Meter ID
Meter Reading
Reverse Current Flow
Tamper Flag
Outage Counter
Peak Consumption Intervals (Current and
Previous User-defined Interval)

ProfilePLUS Graph Example

This 30-day graph shows a usage pattern typical during a brief heat wave. It could also be invaluable for handling the customer's "high-bill" complaint for that period.



For more info,
contact us today.



Datamatic, Ltd.
3600 K Avenue
Plano, TX 75074

800-880-2878 Toll-free
972-234-5000 Phone
972-234-1134 Fax

www.datamatic.com

© 2006 Datamatic, Ltd.
All rights reserved.